

► PRODUCT RANGE ◀

1. GLOBE 2-WAY CONTROL VALVE (SERIES 110)

Design	ASME B16.34
Size & Rating	1/2" to 8" X 150# to 2500# 10" and 12" X 150# to 1500# 14" and 18" X 150# to 300
Trim	<ul style="list-style-type: none"> • Parabolic Contoured - Metal to Metal or Soft Seating with self cleaning. • Microspline & Multistep (Cascade) • Heavy Duty Ported. • Single Cage/Multi Cage (4 stage), (Noise Abatement (Low Noise) Anticavitation Trim with Balanced/ Unbalanced Configuration).
Flow Characteristics	Equal %, Linear & On-Off

1. Conservation of energy principle driven design
2. Design suits to wide variety of application ranging from handling viscous fluid to centrality ultra clean, high pressure drops and high temperature pressure services.
3. Extended stem and bonnet can be given for low temperature Cryogenic application.
4. Bellow sealed valves aid and help in avoiding leakage to atmosphere and thereby complementing-stringent fugitive emission laws, environmental protection law, air purification and energy conservation laws.
5. Bellow seal feature a formed Multiple bellows welded to the hermetic seal or impermeable barrier.
6. Steam jacketted valves are available for application for where the media tends to crystallize when cooled down.
7. Low emission self adjusting gland packing.



2. GLOBE 2-WAY CONTROL VALVE (SERIES 120)

Design	ASME B16.34
Size & Rating	1/2" to 6" X 150# 1" to 6" ANSI 150#
Flow Characteristics	Equal %, Linear & On-Off

1. Conservation of energy principle driven design
2. Design suits to wide variety of application ranging from handling viscous fluid to centrality ultra clean, high pressure drops and high temperature pressure services.
3. Steam jacketted valves are available for application for where the media tends to crystallize when cooled down



3. GLOBE 3-WAY CONTROL VALVE (SERIES 130)

Design	ASME B16.34
Size & Rating	1/2" to 8" X 150# to 900# 10" to 12" X 150# to 600#
Flow Characteristics	Linear, On-Off

1. Modular Design with fewer parts required as well as uniformity of parts for various combination.
2. Low emission self adjusting gland packing.
3. Diverting and Mixing duty application.

► BUILT IN RELIABILITY ◀

4. GLOBE ANGLE TYPE CONTROL VALVE (SERIES 170)

Design	ASME B16.34
Size & Rating	1/2" to 6" X 150# to 2500#
Trim	Contoured, spline, Low Noise, Ported
Flow Characteristics	Equal %, Linear & On-Off

- Conservation of energy principle driven design.
- Design suits to wide variety of application ranging from handling highly viscous fluid to centricty ultra clean, high temperature pressure services.
- Trim design permits continuous flushing of all trim surface by the controlled fluid.



5. PFA LINED GLOBE 2 WAY BELLOWSEAL VALVE (SERIES 117)

Design	ASME B16.34
Size & Rating	3/4" to 4" X 150#
Flow Characteristics	Equal %, Linear & On-Off

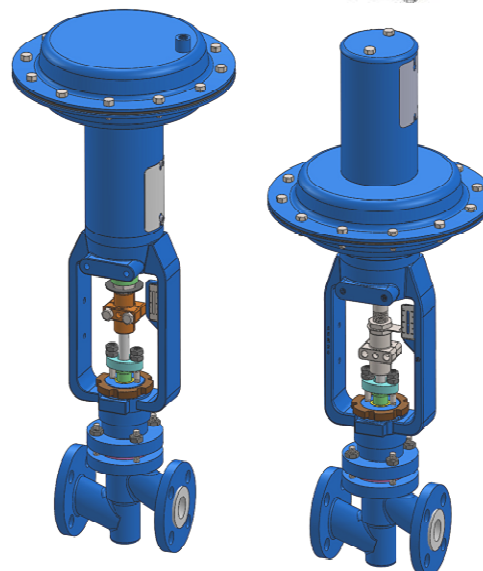
- Transfer molding techniques of lining provide excellent consistency, density and permeability.
- Heavy Duty PTFE bellows seal is leak tight with excellent consistency within its rated pressure / temperature limits.
- Best Suited for Chlorine and Biomedical (Pharma) Applications.



6. PFA LINED GLOBE 2 WAY CONTROL VALVE (SERIES 122)

Design	ASME B16.34
Size & Rating	1/2" to 4" X 150#
Flow Characteristics	Equal %, Linear & On-Off

- Transfer molding techniques of lining provide excellent consistency and permeability.
- Bellow Seal option available.
- PTFE bellows seal is leak tight with excellent consistency within its pressure temperature limits.



► **BUILT IN RELIABILITY** ◀

7. BUTTERFLY CONTROL VALVE

Design	Wafer (BS-5155), Lugged, Semi Lugged
Size & Rating	2" to 36" X 150#
Type	Double Offset (Series-232) Metal to Metal (Series-240) Sleeved (Series-250) PFA lined (Series-260) Triple Offset (Series-233)
Flow Characteristics	Throttling / On-Off

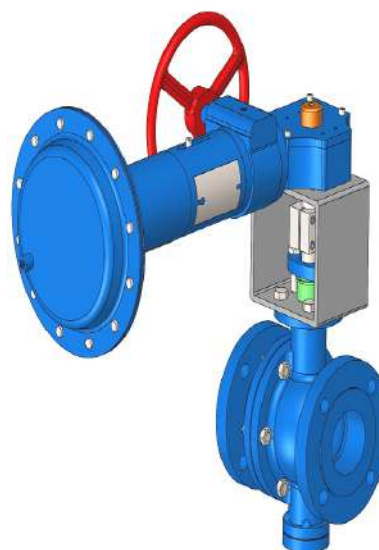
- High capacity with low pressure drop .
- Replacable elastomer/PFA lined.
- Easy maintenance.
- No flange gaskets required for series 250 & 260 valves.



8. V-NOTCH BALL TYPE CONTROL VALVE

Design	BS - 5351
Size & Rating	1/2" to 12" X 150# - (Series 310) 1" to 8" X 150# - (Series 340) 1" to 8" X 150# - (Series 370)
Type	V-Notch 2 Piece (Series-310) V-Notch 2 Piece PFA Lined (Series-340) V-Notch Single Piece (Series-370)
Flow Characteristics	Throttling / On-Off

- A Shearing effect between the ball and seal ensures tight shut-off, even on fibrous slurries.
- The unrestricted, straight – through flow design provides high capacity and wide rangeability.
- Precise contouring of the V-notch balls provides a nearly equal percentage characteristic.
- Replaceable ball seal and back up ring for added rigidity.
- Ball machined to a super smooth finish, hard – chrome plated and polished to increase ball seal life.
- High Cv to body size ratio.
- Transfer molding techniques of lining provide excellent consistency, density and permeability.



BUILT IN RELIABILITY

9. 2 & 3 WAY BALL VALVE

Design	ASME B16.34 / BS - 5351
Size & Rating	1/2" to 12" X 150# (2 - Way) 1" to 6" X 150# (2 - Way) 1/2" to 8" X 150# (3 - Way)
Type	Ball Valve - 2 Piece (Series-320) Ball Valve - 2 Piece PFA Lined (Series-350) Ball Valve - 3 Piece (Series-330)
Flow Characteristics	Throttling / On-Off

- Floating Ball Seat For bubble tight.
- Long Life Seats To minimize downtime and maintenance.



10. DIAPHRAGM CONTROL VALVE

Design	BS - 5156
Size & Rating	1/2" to 8" X 150#
Type	Rubber Lined (Series 410) Unlined (Series 430) PFA Lined (Series 440)
Flow Characteristics	Throttling / On-Off

- Available with various Elastomer linings - Ebonite /EPDM/Hyplon/Butile/Nitrile Buna-N /PTFE /Viton/Glass linings etc.
- Designed for leak proof control of abrasive and corrosive liquids with options of various body lining and diaphragm.



11. FLUSH BOTTOM VALVE (SERIES - 500)

Design	AS PER MFG STD BALL VALVE AS PER BS - 5351
Size & Rating	1" to 8" ANSI 150#, 300# and 600#
Type	Inside Vessel Opening (Series 510) Inside Valve Opening (Series 520) Ram Type (Series 530)
Flow Characteristics	Excellent shutoff capability.

- Flexible design capabilities, seating any vessel configuration.
- Unique packing design to suit temp and fluid needs.
- Measurement temperature available with optional built in RTD sensor.
- Jacketting option available.
- PFA Lining Available.
- Nitrogen flushing option available.

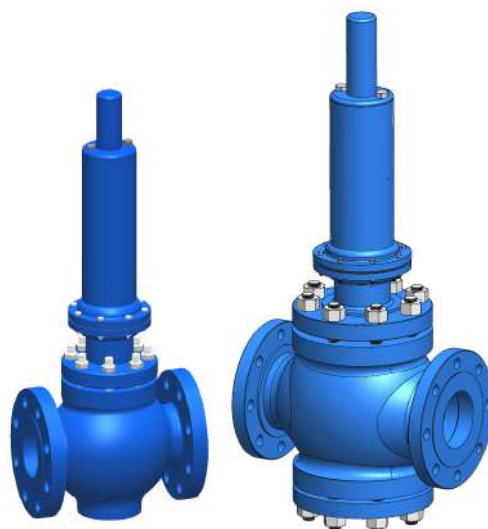


→ **BUILT IN RELIABILITY** ←

12. PRESSURE REGULATING VALVE

Design	ASME B 16.34
Size & Rating	1/2" to 12" X 150# and 300#, Higher on request
Type	Downstream Regulating PRV (Series 600) Upstream Regulating PRV (Series 700) Low Pressure-Nitrogen Blanketting Valves (Series 612L)
Flow Characteristics	High Sensitivity and stability of the set pressure.

- Temper resistance an adjusting screw with locknut and protective cap is standard to discourage tempering with pressure setting.
- Easy maintainance.



13. DESUPHEATER CONTROL VALVE (SERIES - 800)

Design	ASME B 16.34
Size & Rating	1", 1.1/2" & 2" X 150# to 1500#
Type	Variable Spray (Series 810) Fixed Spray (Series 820) Multinozzle Spray (Series 830)
Flow Characteristics	Several variation available (Both Fixed type and variable type).

- Several variation available (Both Fixed type and variable type).
- Available for installation in steam line from 1" to 48" in diameter.
- Erosion resistance M.O.C, easy in installlation.



14. SAFETY RELIEF VALVE

Design	API RP 520, 521, 526.
Size & Rating	1" to 8" X 150 To 600# (Series 41) 1/2" to 1.1/2" x 150# (Series 42)
Type	Flanged End Connection (Series 41) Screwed End Connection (Series 42)
Flow Characteristics	Full nozzle, Extensive spring range

- Option of metal & soft seating, Jacketting Option.
- Easy maintenance, Available in various M.O.C



15. PRESSURE REDUCTION AND DESUPERHEATER STATION

Design	ASME B 16.34
Size & Rating	1" to 12" X 150# To 600# Higher on Request.
Flow Characteristics	Pressure Control and Desuperheating the steam



16. PRESSURE REDUCING STATION

Design	ASME B 16.34
Size & Rating	1" to 12" X 150# To 600# Higher on Request.



17. POWER CYLINDER (SERIES - 900)

Design	Piston Double Acting cylinder
Size	2" to 14"
Stroke	Upto 20" standard, Higher Sizes on Request
Flow Characteristics	Wide Range of sizes and strokes.

- Rear Trunion mounting.
- Option of various accessories.
- Easy reversal of action.



BUILT IN RELIABILITY

ACCESSORIES

1. PNEUMATIC VALVE POSITIONER -SINGLE ACTING

Model	PVP-1
Input	0.2-1.0 KSC
Stroke range	14 to 100 mm
Action	Direct/Reverse
Linearity/Hysterises	Within 1% of valve stroke



2. AIR LOCK

Model	PAL-400
Connection	1/4" NPT (F)
Max. Supply Pressure	150 Psig
Pressure Ratio	1:1
Output Capacity	13.5 SCFM
Reproducibility	0.1%



Model	PAL-500S (Single Acting) PAL-500D (Double Acting)
Connection	1/4" NPT (F)
Max. Supply Pressure	150 Psig
Linearity/Hysterises	Within 1% of valve stroke



3. VOLUME BOOSTER

Model	PVB-100
Connection	1/4" NPT (F)
Max. Supply pressure	150 Psig
Pressure Ratio	1:1



4. HIGH VOLUME BOOSTER

Model	PVB-300
Connection	1/2" or 3/4" NPT (F)
Max. Supply pressure	150 Psig
Pressure Ratio	1:1



→ **BUILT IN RELIABILITY** ←

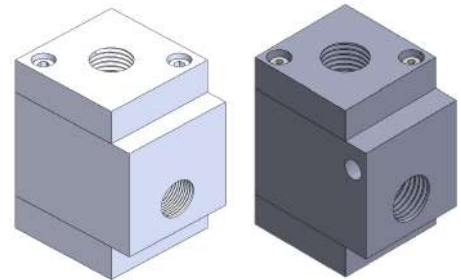
5. LIMIT SWITCHES WITH ENCLOSURE

Sensor	HONEYWELL , P & F
Enclosure	Weatherproof / Flameproof
Cable entry	1/2" NPT (F), M20 X 1.5



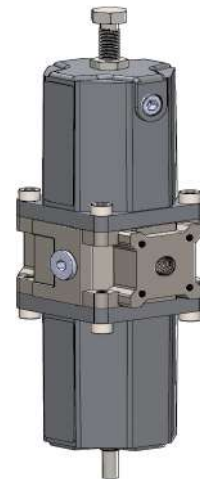
6. QUICK EXHAUST VALVE

Model	PQE (1400,1200,3400)
Size	1/4", 1/2", 3/4" X NPT(F)
Operating Pressure	12 Bar (175 psi)
Operating Temp	-20°C to +70°C



7. AIR FILTER PRESSURE REGULATOR

Model	PAR (1400,1200,3400)
Size	1/4", 1/2", 3/4" X NPT(F)
Media	Air, Inert gas & Sweet gas
Operating Pressure	20 Bar (290 psi)
Operating Temp	-20°C to + 80°C
Max Relief Flow	At 2 bar secondary pressure 0.5cc/s
Relief Vent Port	1/8" NPT (fitted with Breather)



8. POSITION TRANSMITTER

Model	SG4-20LA
Operating Voltage	18-30 V Dc
Linearity Error	±1% (4-20mA) ±2% (0-135Ω)
Working Pressure	Upto 80°C
Load impedance	600Ω



→ **BUILT IN RELIABILITY** ←

CONTACT US

INDIA

FACTORY / HEAD OFFICE [UNIT-I]

PNEUCON VALVES PVT. LTD.

Plot No. A-35, Road No. 10,
Wagle Industrial Estate,
Thane – 400 604,
India.

Contact Persons :

Mr. D. C. Jethwani : +91 – 93220 30255

Mr. J. N. Chawla : +91 – 93243 39853

Mr. M. C. Jethwani : +91 – 93220 30252

Phone : +91 (22) 2583 8371 / 8372 / 8369

Email : sales@pneuconvalves.com

info@pneuconvalves.com

Web : www.pneuconvalves.com

FACTORY[UNIT – II]

PNEUCON VALVES PVT. LTD.

Plot No. A-352, Road No-26,
Wagle Industrial Estate, Thane – 400604,
India.

Contact Persons :

Mr. C. D. Jethwani : +91 – 9820767222

Phone : 7272890404 / 808

SUBSIDIARY COMPANY

PNEUCON AUTOMATION PVT. LTD.

Plot No. 1/235 B, Off Blossom High School,
KolshetBalkum Road,
Thane (West) – 400 607, India

Contact Persons :

Mr. Jitendra M. Jethwani : +91 – 98203 23888

Phone : +91 – (22) 2589 6384, 2589 5129

Email : info@pneuconautomation.com

Web : www.pneuconautomation.com

SALES BRANCH OFFICE

PNEUCON VALVES PVT. LTD.

102, RAMA EQUATOR,
Morwadi, Pimpri-Chichwad, Pune-411018

Contact Persons :

Mr. Kashyap R.D. : +91 8655675738

Email : salespune@pneuconvalves.com

Web : www.pneuconvalves.com

OVERSEAS

MALAYSIA

IDEAL JUPITER SDH BHD

K- 12080, Jalan Kugang Kurus 24000 Kamaman
Terengganu Malaysia.

Contact Persons :

Mr. Mohd Rosdi : +60199154313

Web : www.pneuconvalves.com

UK

VALVE SOLUTIONS LTD.

Unit 10, Acron Business Park,
Shipley, West Yorkshire,
England, UK

Contact Persons :

Mr. Richard Williams : +44 – 79765 68862

Mr. Anthony Martin : +44 – 79327 68452

Phone : + 44 – 1274 531992

Email : enquiry@valvesolutions.co.uk,

Web : www.valvesolutions.co.uk

→ **BUILT IN RELIABILITY** ←